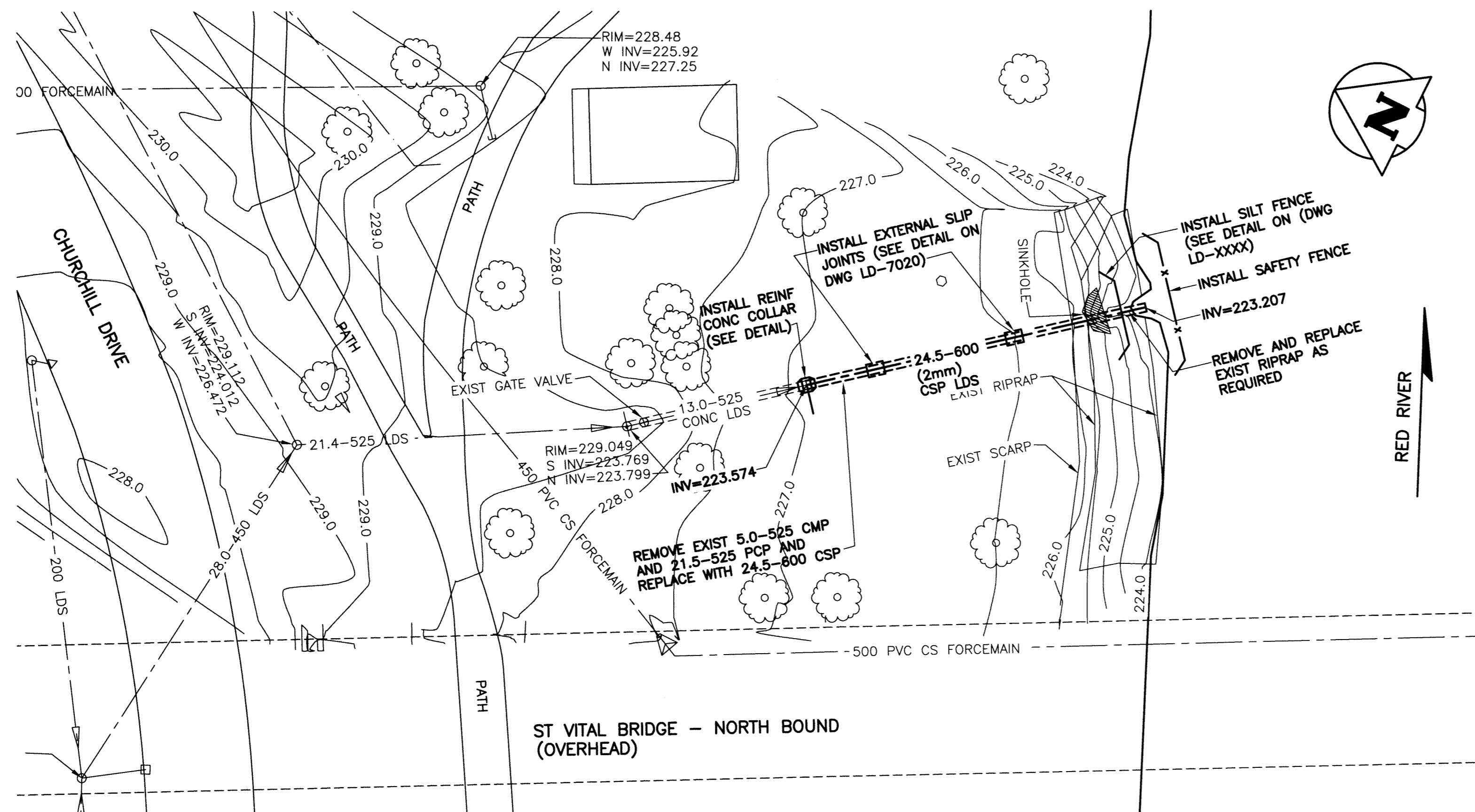


REINFORCED CONCRETE COLLAR DETAIL
SCALE: NTS



NOTE:

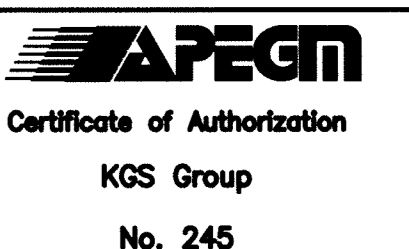
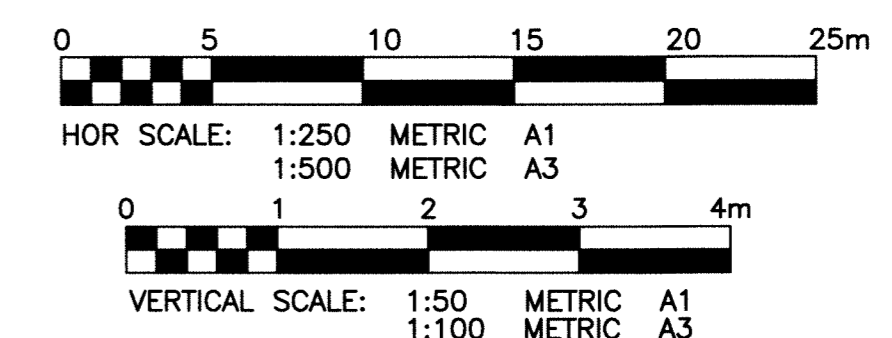
1. ALL EXCAVATED MATERIAL TO BE REMOVED FROM SITE. NO STOCK PILING MATERIAL.
2. RIPRAP ABOVE U.W.R.L. (EL 222.000) TO BE SUB-CUT INTO THE RIVERBANK AND PLACED FLUSH WITH ORIGINAL GROUND.

PROPERTY LIMITS DELINEATION

DELINEATION OF PROPERTY LIMITS AS SHOWN ON THIS DWG DOES NOT REPRESENT A "LEGAL SURVEY". KGS GROUP MAKES NO REPRESENTATION OR WARRANTY AS TO THE ACCURACY OF PROPERTY LIMITS DELINEATED ON THIS DWG, NOR ON THE DIMENSIONAL ACCURACY OF DWG FEATURES RELATIVE TO THOSE PROPERTY LIMITS.

METRIC

WHOLE NUMBERS INDICATE MILLIMETRES
DECIMALIZED NUMBERS INDICATE METRES



File Name: P:\Projects\2012\12-0107-013\DocControl\ToBeIssued\DWG\12-0107-013_LD-7019-Rev 0.dwg - Tab: LD-7019 Plotted By: Dberche 13/01/02 [Wed 4:24pm] A1/PLD SCALE: 1=1

300 LDS	LAND DRAINAGE SEWER	300 LDS		TEST HOLE			
250 WWS	WASTE WATER SEWER	250 WWS	+	GUY WIRE			
	GAS		-	LIGHT STANDARD			
	HYDRO		••	BACK OF CURB			
	M.T.S.		---	CONCRETE			
150 WM	WATERMAIN	150 WM	---	ASPHALT			
+	HYDRANT	+	+	SIDEWALK		⊙ PROFILE	
⊙	VALVE	⊙	⊙	PROPERTY LINE		□ N/W LANE EDGE	
○	MANHOLE	○	○	SURVEY BAR		○ S/E LANE EDGE	
□	CATCH BASIN	□	+	GEODETC BENCHMARK		○ PARKING/DRIVEWAY	
▽	CURB INLET	▽	⊕	ELEVATION	(32.231)	TTTTT WINDOW/DOOR SILL	
•	POLES		231.334				
EXISTING	LEGEND-PLAN	PROPOSED	EXISTING	LEGEND-PLAN	PROPOSED	EXISTING	LEGEND-PROFILE

LOCATION APPROVED UNDERGROUND STRUCTURES

SUPV. U/G STRUCTURES COMMITTEE DATE

NOTE:
LOCATION OF UNDERGROUND STRUCTURES AS SHOWN ARE BASED ON THE BEST INFORMATION AVAILABLE BUT NO GUARANTEE IS GIVEN THAT ALL EXISTING UTILITIES ARE SHOWN OR THAT THE GIVEN LOCATIONS ARE EXACT. CONFIRMATION OF EXISTENCE AND EXACT LOCATION OF ALL SERVICES MUST BE OBTAINED FROM THE INDIVIDUAL UTILITIES BEFORE PROCEEDING WITH CONSTRUCTION.

B.M. KGS BASE ELEV. -	DWGS BASED ON C.S.R.S. NAD 83 SYSTEM, UTM GRID
NO.	REVISIONS
DATE	BY

KGS GROUP CONSULTING ENGINEERS	
DESIGNED BY	RBO
CHECKED BY	1/1/1
DRAWN BY	DMW
APPROVED BY	
HOR. SCALE:	1:250
VERTICAL:	1:50
ISSUED FOR TENDER	13/01/04
RELEASED FOR CONSTRUCTION:	
DATE	12/12/20

ENGINEER'S SEAL
CONSULTANT DRAWING NO.
12-0107-013

THE CITY OF WINNIPEG WATER AND WASTE DEPARTMENT	
PROJECT TITLE	
2013 OUTFALL RENEWAL/ REHABILITATION PROGRAM	
CHURCHILL DR. OUTFALL (RR-41) PLAN AND PROFILE	
SHEET	OF
04	05
COMPUTER FILE NAME	
12-0107-013	
CITY DRAWING NUMBER	
LD-7019	